

KAREN son asientos con mucha personalidad, que les viene dada por su respaldo en forma de "T" de proporciones amplias. Las sillas y taburetes KAREN están disponibles con varias versiones de patas, hasta cinco diferentes. Orientados para muy variados entornos, también pueden ser apilables, acabados en madera, lacados, o con asiento tapizado. | *KAREN are seats with a lot of personality, which is given by their back piece in the form of "T" of wide proportions. KAREN chairs and stools are available with several leg versions, up to five different. Suitable for a wide variety of environments, they can also be stackable, finished in wood, lacquered, or with upholstered seat.*

KAREN

By Enrique Martí asociados

KAREN MF
Madera y contrachapado de fresno. Color natural. | *Ash wood and plywood. Natural color.*



KAREN PH

Metal texturizado color negro. Contrachapado de fresno color RAL 3014 Rojo viejo. | *Metal in textured black color. Ash plywood in RAL 6034 Antique pink color.*

KAREN PP

Metal texturizado color negro. Contrachapado de fresno color RAL 3032 Rojo rubi perlado. | *Metal in textured black color. Ash plywood in RAL 3032 Pearl ruby red color.*

KAREN PX

Metal texturizado color negro. Contrachapado de fresno color RAL 6034 Turquesa pastel. | *Metal in textured black color. Ash plywood in RAL 6034 Pastel turquoise color.*

KAREN MF

Madera y contrachapado de fresno teñido en negro. | *Ash wood and plywood dyed in black.*

KAREN MR

Madera de fresno teñida en negro. Contrachapado de fresno color blanco. | *Ash wood dyed in black. Ash plywood in white color.*



KAREN PX ▾

Metal texturizado color negro. Contrachapado de fresno color nogal americano. |
Metal in textured black color. Ash plywood in american walnut color.



KAREN PX >

Metal color RAL 6011 Verde reseda. Contrachapado de fresno color RAL 6011 Verde reseda. Tapizado Angel oliva. | *Metal in RAL 6011 Reseda green color. Ash plywood in RAL 6011 Reseda green color. Angel oliva upholstery.*

GOLTAY 140x90 cm

Madera y chapa de roble. Color natural. | *Oak wood and wood veneer top. Natural color.*



KAREN T02 >
Madera y contrachapado de fresno. Color nogal americano. | *Ash wood and plywood. American walnut color.*

KAREN T02 ▾
Metal texturizado color negro. Contrachapado de fresno color natural. | *Metal in textured black color. Ash plywood in natural color.*



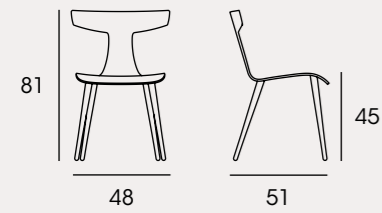
Los espacios donde los diseños **KAREN** están presentes adquieren un estilo visual marcado gracias a su respaldo característico en forma de "T", sin eclipsar por ello la armonía general que los rodea. | *The spaces where **KAREN** designs are present acquire a marked visual style thanks to their characteristic "T" shaped back, without overshadowing the general harmony that surrounds them.*

KAREN MR
Madera y contrachapado de fresno. Color natural. | *Ash wood and plywood. Natural color.*

KAREN MF
Madera y contrachapado de fresno. Color RAL 2012 Naranja salmón. | *Ash wood and plywood. RAL 2012 Salmon orange color.*

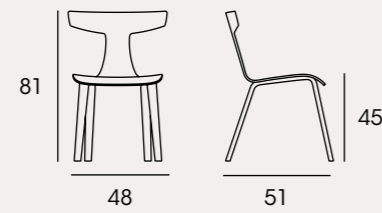
CELINE Ø105 cm
Madera y chapa de roble. Color natural. | *Oak wood and wood veneer. Natural color.*





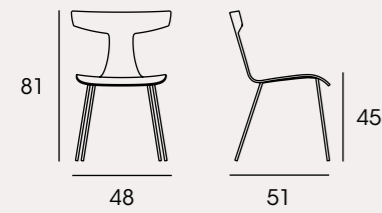
KAREN MR

Estructura: Madera de fresno.
Asiento y respaldo: Contrachapado de fresno. Asiento tapizado opcional.
Acabados: Catálogo acabados DOOS. Acabados según muestra.
Tela (no se hace desenfundable): Unidad 0'6 m | 6 o más 1'8 m.
Otros: 0'4 m3 | 13 Kg | x 2 bulto.



KAREN MF

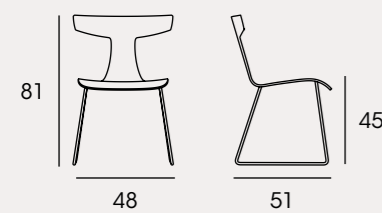
Structure: Ash wood.
Seat and back: Ash plywood. Optional upholstered seat.
Finishes: DOOS finishes catalogue. Finishes according to sample.
Fabric (cannot be made to be removed): Unit 0'6 m | 6 or more 1'8 m.
Other: 0'4 m3 | 13 Kg | x 2 package.



KAREN PH

Apilable.
Patas: Tubo metal de 14x2 mm.
Asiento y respaldo: Contrachapado de fresno. Asiento tapizado opcional.
Acabados: Cromo brillo o mate. Catálogo acabados DOOS. Acabados según muestra.
Tela (no se hace desenfundable): Unidad 0'6 m | 6 o más 1'8 m.
Otros: 0'4 m3 | 10 Kg | x 2 bulto.

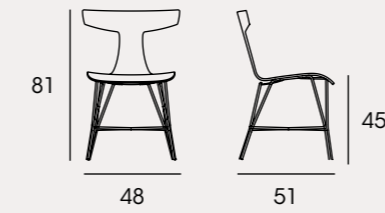
Stackable.
Legs: 14x2 mm metal tube.
Seat and back: Ash plywood. Optional upholstered seat.
Finishes: Chrome gloss or matt. DOOS finishes catalogue. Finishes according to sample.
Fabric (cannot be made to be removed): Unit 0'6 m | 6 or more 1'8 m.
Other: 0'4 m3 | 10 Kg | x 2 package.



KAREN PP

Patas: Varilla acero de 12 mm.
Asiento y respaldo: Contrachapado de fresno. Asiento tapizado opcional.
Acabados: Cromo brillo o mate. Catálogo acabados DOOS. Acabados según muestra.
Tela (no se hace desenfundable): Unidad 0'6 m | 6 o más 1'8 m.
Otros: 0'4 m3 | 12 Kg | x 2 bulto.

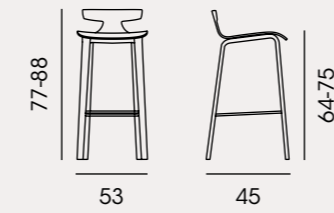
Legs: 12 mm steel rod.
Seat and back: Ash plywood. Optional upholstered seat.
Finishes: Chrome gloss or matt. DOOS finishes catalogue. Finishes according to sample.
Fabric (cannot be made to be removed): Unit 0'6 m | 6 or more 1'8 m.
Other: 0'4 m3 | 12 Kg | x 2 package.



KAREN PX

Patas: Tubo de acero 12 mm.
Asiento y respaldo: Contrachapado de fresno. Asiento tapizado opcional.
Acabados: No es posible cromo. Catálogo acabados DOOS. Acabados según muestra.
Tela (no se hace desenfundable): Unidad 0'6 m | 6 o más 1'8 m.
Otros: 0'4 m3 | 16 Kg x 2 bulto.

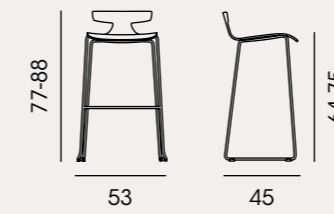
Legs: 12 mm metal tube.
Seat and back: Ash plywood. Optional upholstered seat.
Finishes: Chrome is not possible. DOOS finishes catalogue. Finishes according to sample.
Fabric (cannot be made to be removed): Unit 0'6 m | 6 or more 1'8 m.
Other: 0'4 m3 | 16 Kg x 2 package.



KAREN T01

Dos alturas.
Patas: Madera de fresno.
Asiento y respaldo: Contrachapado de fresno. Asiento tapizado opcional.
Reposapiés: Acero calibrado 12 mm cromado.
Acabados: Catálogo acabados DOOS. Acabados según muestra.
Tela (no se hace desenfundable): Unidad 0'6 m | 6 o más 1'8 m.
Otros: 0'32 m3 | 6 Kg | x 1 bulto.

Two heights.
Legs: Ash wood.
Seat and back: Ash plywood. Optional upholstered seat.
Footrest: 12 mm chromed calibrated steel.
Finishes: DOOS finishes catalogue. Finishes according to sample.
Fabric (cannot be made to be removed): Unit 0'6 m | 6 or more 1'8 m.
Other: 0'32 m3 | 6 Kg | x 1 package.



KAREN T02

Dos alturas.
Patas: Varilla de acero 12 mm.
Asiento y respaldo: Contrachapado de fresno. Asiento tapizado opcional.
Acabados: Cromo brillo o mate. Catálogo acabados DOOS. Acabados según muestra.
Tela (no se hace desenfundable): Unidad 0'6 m | 6 o más 1'8 m.
Otros: 0'32 m3 | 6 Kg | x 1 bulto.

Two heights.
Legs: 12 mm. steel rod
Seat and back: Ash plywood. Optional upholstered seat.
Finishes: Chrome gloss or matt. DOOS finishes catalogue. Finishes according to sample.
Fabric (cannot be made to be removed): Unit 0'6 m | 6 or more 1'8 m.
Other: 0'32 m3 | 6 Kg | x 1 package.

METAL: COLORES GAMA RAL CONSULTAR CARTA RAL
METAL: RAL CHART COLORS SEE RAL CHART

METAL: COLORES TEXTURIZADOS
METAL: TEXTURED COLORS



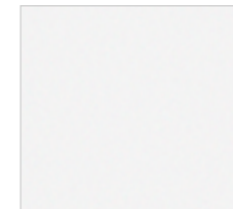
TEXTURIZADO ÓXIDO
TEXTURED OXIDE



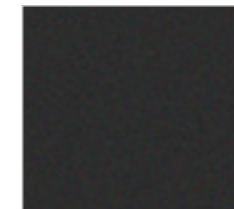
TEXTURIZADO NEGRO
TEXTURED BLACK



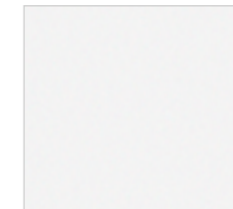
NEGRO
BLACK



TEXTURIZADO BLANCO
TEXTURED WHITE

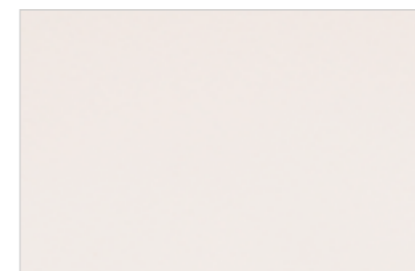


TEXTURIZADO GRAFITO
TEXTURED GRAPHITE



BLANCO
WHITE

PORCELÁNICOS
PORCELAIN STONEWARE



BASIC NEU



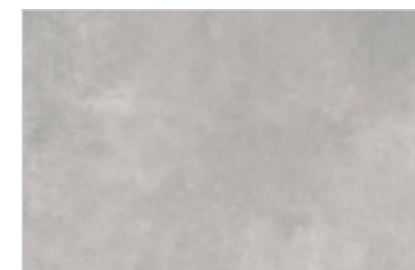
TRAVERTINO TIVOLI NATURAL



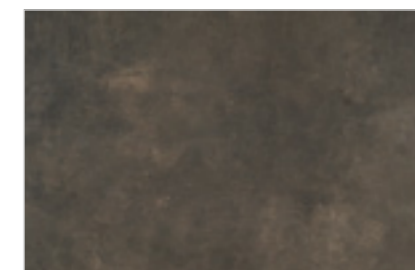
KALOS BIANCO



AGATA CARAMEL NATURAL



VULCANO CONCRETE



VULCANO ROCA

MADERA
WOOD

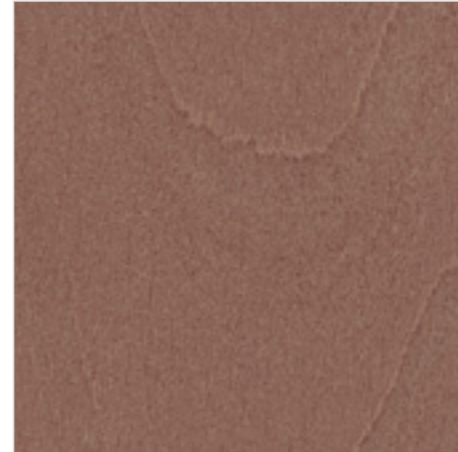
COLORES TEÑIDOS SOBRE CHAPA
DE MADERA DE **HAYA** | *DYE COLORS*
ON **BEECH** WOOD VENEER



NATURAL



CEREZO | *CHERRY*



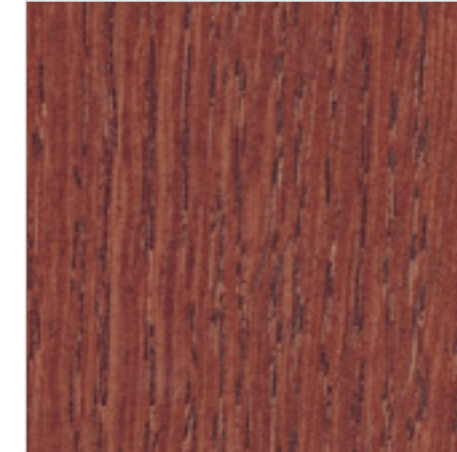
NOGAL AMERICANO | *AMERICAN WALNUT*

MADERA
WOOD

COLORES TEÑIDOS SOBRE CHAPA
DE MADERA DE **ROBLE** | *DYE COLORS*
ON **OAK** WOOD VENEER



NATURAL



CEREZO | *CHERRY*

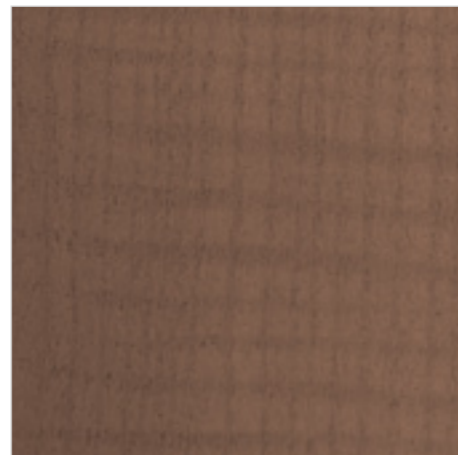


NOGAL AMERICANO | *AMERICAN WALNUT*

COLORES TEÑIDOS SOBRE CHAPA
DE MADERA DE **FRESNO** | *DYE COLORS*
ON **ASH** WOOD VENEER

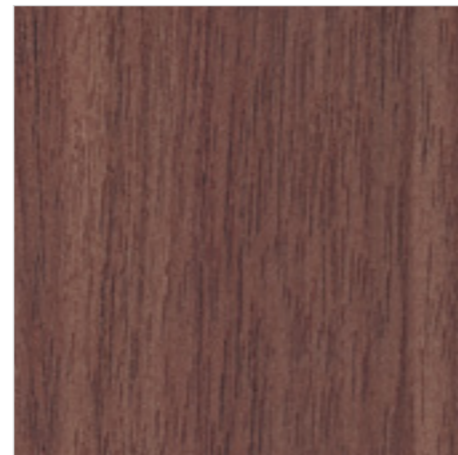


NATURAL

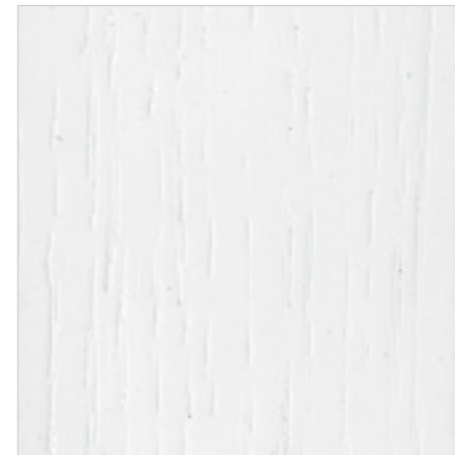


NOGAL AMERICANO

COLORES TEÑIDOS SOBRE CHAPA
DE MADERA DE **NOGAL** | *DYE COLORS*
ON **WALNUT** WOOD VENEER



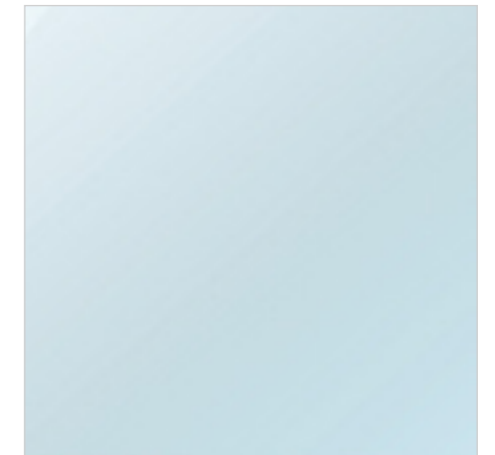
NOGAL AMERICANO | *AMERICAN WALNUT*



BLANCO PORO ABIERTO | *OPEN PORE WHITE*



NEGRO PORO ABIERTO | *OPEN PORE BLACK*



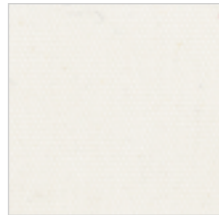
CRISTAL TRANSPARENTE | *CLEAR GLASS*

TELAS
FABRICS

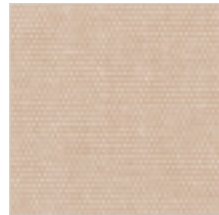
ÁFRICA. SERIE A
ÁFRICA. A SERIES



BLUSH



BLANCO



SAND



LILA



MORADO



CUIR



MARINO



ANTRACITA



CUERO

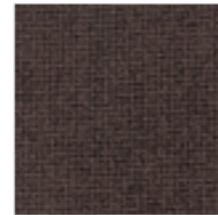


NAVI

ÁNGEL. SERIE A
ÁNGEL. A SERIES



CAMEL



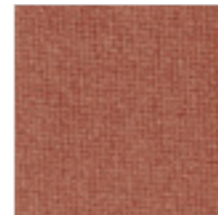
MARRÓN



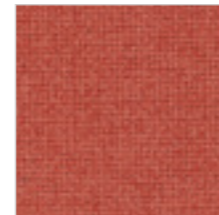
MOSTAZA



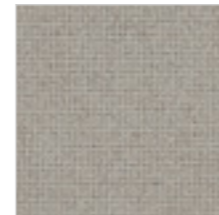
OLIVA



TIERRA



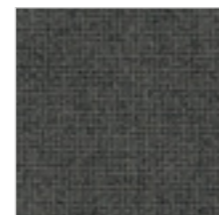
NARANJA



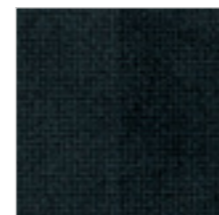
ARENA



VISIÓN



CAFÉ



NEGRO

TELAS
FABRICS

RIMINI. SERIE B
RIMINI. B SERIES



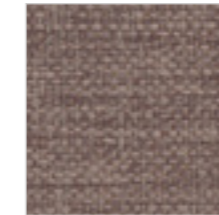
COLOR 100



COLOR 401



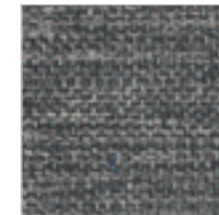
COLOR 402



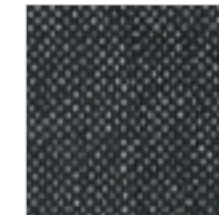
COLOR 403



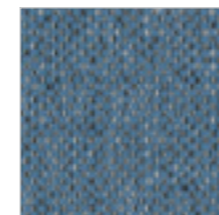
COLOR 600



COLOR 601



COLOR 200

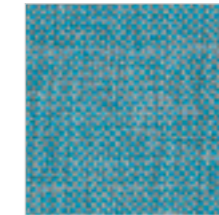


COLOR 702

URUS. SERIE C
URUS. C SERIES



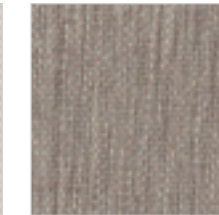
COLOR 42



COLOR 49



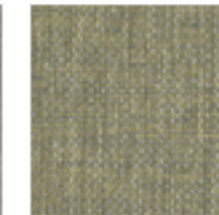
COLOR 08



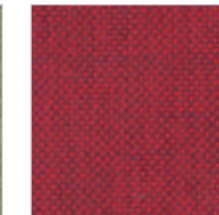
COLOR 05



COLOR 12



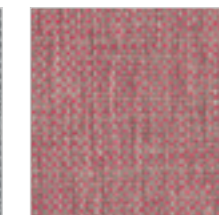
COLOR 39



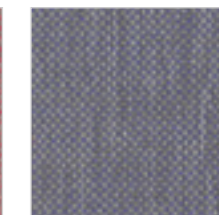
COLOR 91



COLOR 51



COLOR 60



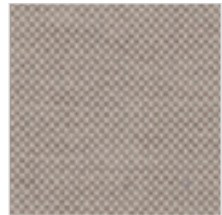
COLOR 63

TELAS
FABRICS

LIBRA. SERIE C
LIBRA. C SERIES



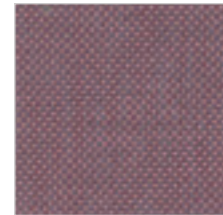
COLOR 07



COLOR 10



COLOR 05



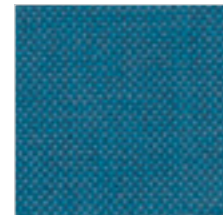
COLOR 64



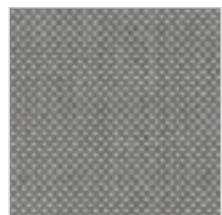
COLOR 12



COLOR 40



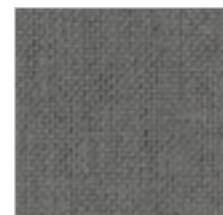
COLOR 42



COLOR 51



COLOR 53



COLOR 52

DYNATOS. SERIE C
DYNATOS. C SERIES



COLOR 45



COLOR 102



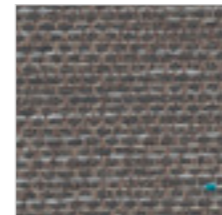
COLOR 60



COLOR 03



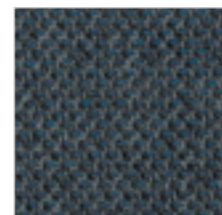
COLOR 16



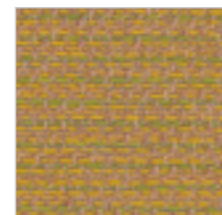
COLOR 12



COLOR 123



COLOR 147



COLOR 06



COLOR 01

TELAS
FABRICS

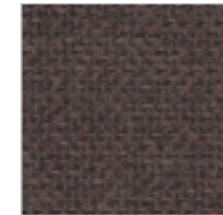
KOMPOS. SERIE C
KOMPOS. C SERIES



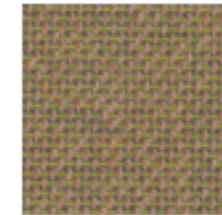
COLOR 65



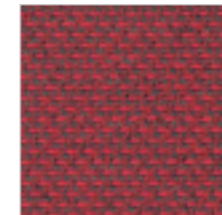
COLOR 40



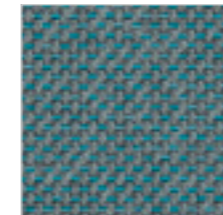
COLOR 15



COLOR 52



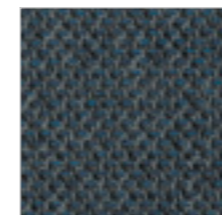
COLOR 35



COLOR 147



COLOR 67



COLOR 48



COLOR 156

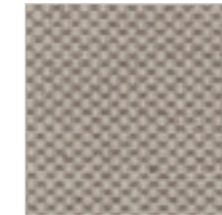


COLOR 123

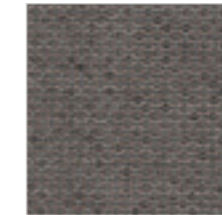
GEMINI. SERIE C
GEMINI. C SERIES



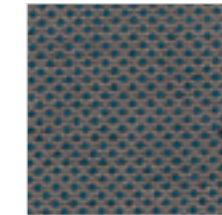
COLOR 5



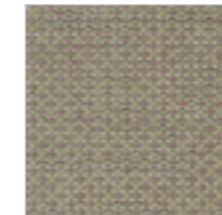
COLOR 10



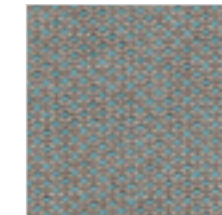
COLOR 12



COLOR 45



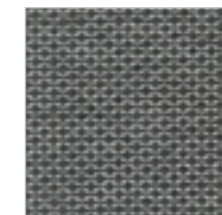
COLOR 30



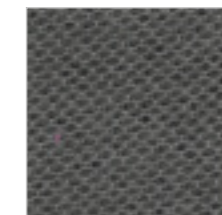
COLOR 40



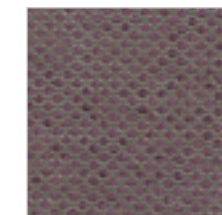
COLOR 50



COLOR 51



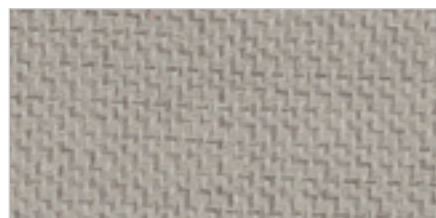
COLOR 53



COLOR 63

TELAS
FABRICS

BLEND. SERIE D
BLEND. D SERIES



COLOR 11



COLOR 12



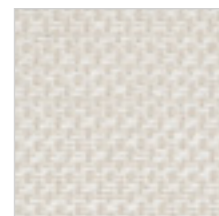
COLOR 10



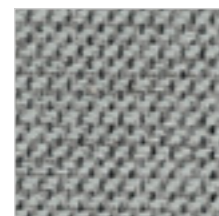
COLOR 07



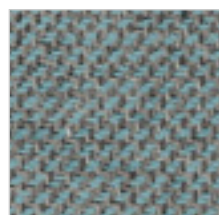
COLOR 30



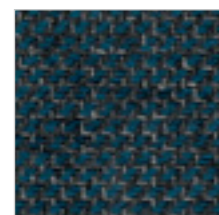
COLOR 02



COLOR 51



COLOR 49

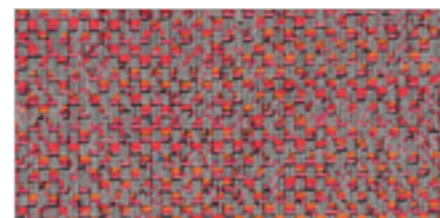


COLOR 47



COLOR 53

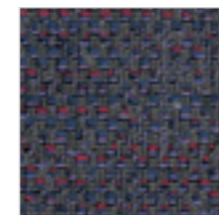
GAUDI. SERIE D
GAUDI. D SERIES



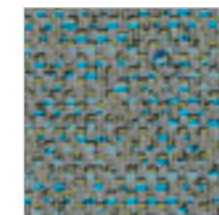
COLOR 60



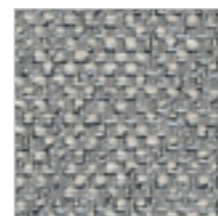
COLOR 46



COLOR 48



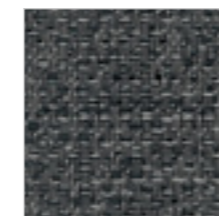
COLOR 30



COLOR 51



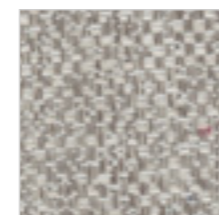
COLOR 14



COLOR 53



COLOR 12



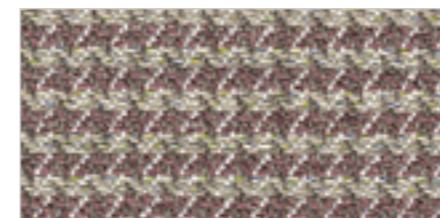
COLOR 11



COLOR 05

TELAS
FABRICS

CHIC + DAS. SERIE D
CHIC + DAS. D SERIES



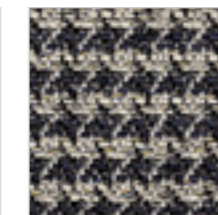
CHIC COLOR 66



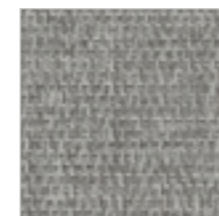
DAS COLOR 102



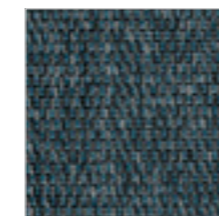
CHIC COLOR 52



CHIC COLOR 45



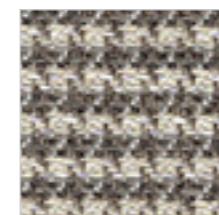
DAS COLOR 105



DAS COLOR 106



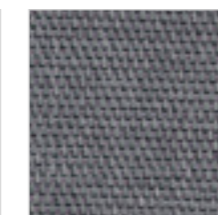
DAS COLOR 107



CHIC COLOR 10

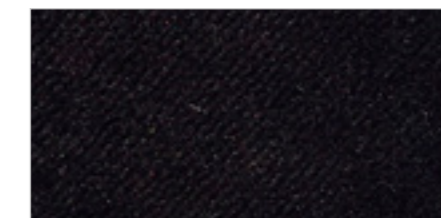


CHIC COLOR 05

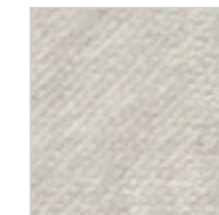


DAS COLOR 109

TELA PARA VIVOS
FABRIC FOR WELTING



NEGRO



BLANCO ROTO



BEIGE



MARRÓN