


EVIA se adapta a prácticamente todas las necesidades objetivas de belleza, comodidad, resistencia y durabilidad. De formas femeninas y redondeadas, suaves y sensuales, ligeras y esbeltas, EVIA seduce a primera vista. Es camaleónico y adaptable gracias a sus diferentes bases y acabados, pudiendo ser desde un cálido compañero de lectura hasta un perfecto complemento del trabajo diario. EVIA no es un sillón más; es el sillón con mayúsculas. | *EVIA adapts to virtually all objective needs of beauty, comfort, strength and durability. With feminine and rounded shapes, soft and sensual, light and slender, EVIA seduces at first sight. It is chameleonic and adaptable thanks to its different bases and finishes, and can be a warm reading companion but also a perfect complement to daily work. EVIA is not an armchair; it is the armchair.*

EVIA By Enrique Martí asociados

EVIA PZ
Metal texturizado color negro. | *Metal in textured black color.*





EVIA PP 
Metal texturizado color negro. Tapizado Kompos 67. | *Metal in textured black color.*
Kompos 67 upholstery.

COPA Ø90 cm
Metal texturizado color negro. Porcelánico Basic Neu. | *Metal in textured black color.*
Porcelain stoneware in Basic Neu.

EVIA PH 
Metal texturizado color negro. Tapizado Rimini 402. | *Metal in textured black color.*
Rimini 402 upholstery.

COPA 80x80 cm
Metal texturizado color negro. Porcelánico Basic Neu | *Metal in textured black color.*
Porcelain stoneware in Basic Neu.



< EVIA PH

Metal texturizado color negro. Tapizado Libra 51. | *Metal in textured black color. Libra 51 upholstery.*

COPA Ø120 cm

Metal texturizado color negro. Porcelánico Basic Neu. | *Metal in textured black color. Porcelain stoneware in Basic Neu.*

∨ EVIA PH

Metal texturizado color negro. Tapizado Gemini 53. | *Metal in textured black color. Gemini 53 upholstery.*

EVIA PH

Metal texturizado color negro. Tapizado Ángel Tierra. | *Metal in textured black color. Ángel Tierra upholstery.*





< EVIA MF
Madera de fresno color nogal americano. Tapizado Libra 07. | *Ash wood in american walnut color. Libra 07 upholstery.*

STELA 160x90 cm
Madera y chapa de nogal. Color nogal americano. | *Walnut wood and wood veneer. American walnut color.*

∨ EVIA MF
Madera de fresno color natural. Tapizado Libra 40. | *Ash wood in natural color. Libra 40 upholstery.*



EVA PP >

Metal texturizado color negro. Tapizado Libra 05. | *Metal in textured black color. Libra 05 upholstery.*

BENEDICTA 200x100 cm

Madera de roble color natural. Encimera cristal transparente. | *Oak wood in natural color. Clear glass top.*

EVA PP ▼

Metal cromado. Tapizado Gemini 53. | *Chrome metal. Gemini 53 upholstery.*



EVA GM >

Madera de fresno color natural. Tapizado Ángel Oliva. | *Ash wood in natural color. Ángel Oliva upholstery.*

BENEDICTA 210x100 cm

Madera de roble color natural. Encimera cristal transparente. | *Oak wood in natural color. Clear glass top.*

EVA GM ▾

Madera de fresno color natural. Tapizado Ángel Vision. | *Ash wood in natural color. Ángel Vision upholstery.*



EVA MR ▾

Madera de fresno teñida en negro. Tapizado Gemini 53. | *Ash wood dyed in black. Gemini 53 upholstery.*



EVA MR ▸

Madera de fresno color natural. Tapizado Chic 05. | *Ash wood in natural color. Chic 05 upholstery.*

LONDRES Ø105 cm

Madera y chapa de roble. Color natural. | *Oak wood and wood veneer. Natural color.*



EVA PZ
Metal texturizado color óxido. Tapizado Libra 05. | *Metal in textured oxide color. Libra 05 upholstery.*

ALIENA 160x90 cm
Metal texturizado color óxido. Porcelánico Basic Neu. | *Metal in textured oxide color. Porcelain stoneware in Basic Neu.*



EVIA GA ▾

Metal cromado. Giro rotatorio. Tapizado Kompos 48. | *Chrome metal. Rotation movement. Kompos 48 upholstery.*

EVIA GR

Aluminio cromado. Ruedas, giro rotatorio y altura regulable. Tapizado Blend 102. | *Chrome aluminum. Wheels, rotation movement and adjustable height. Blend 102 upholstery.*

EVIA GB

Aluminio cromado. Giro rotatorio y altura regulable. Tapizado Drom 11. | *Chrome aluminum. Rotation movement and adjustable height. Drom 11 upholstery.*

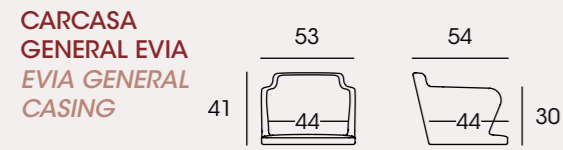
EVIA GB >

Aluminio cromado. Giro rotatorio y altura regulable. Tapizado Rimini 402. | *Chrome aluminum. Rotation movement and adjustable height. Rimini 402 upholstery.*

ÓPERA 260x110 cm

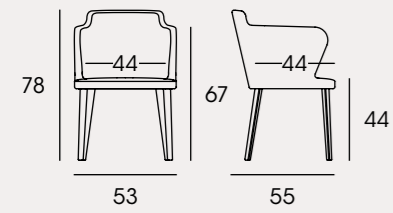
Madera y chapa de roble. Color natural. | *Oak wood and wood veneer. Natural color.*





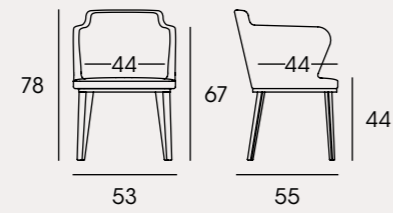
Goma inyectada de poliuretano flexible, ignífuga según norma UNE 1021-2:06 y norma BS 5852:06. Moldeada en frío. Densidad 60 kg. Carcasa general Evia: Varilla de metal. Asiento haya. Suspensión con cinchas NEA (garantía 10 años). Carcasa pie central giratorio Evia: Varilla. Asiento fibra.

Injected flexible polyurethane foam, flame retardant according to UNE 1021-2:06 and BS 5852:06 methods. Cold moulded. 60 kg density. Evia general casing: Metal rod. Seat beech wood. NEA webbing suspension (10 year warranty). Evia rotating central foot casing: Metal rod. Fibre seat.



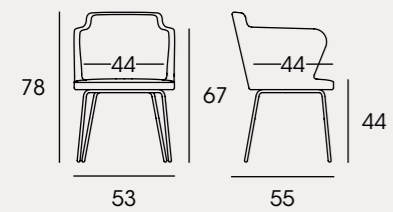
EVIA MR

Estructura: Ver carcasa general Evia.
Patas: Madera de fresno.
Acabados: Catálogo acabados DOOS. Acabados según muestra.
Tela (no se hace desenfundable): Unidad 1'25 m | 6 o más 7'5 m.
Otros: 0'32 m3 | 12 Kg | x 1 bulto.



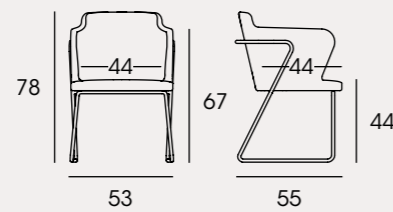
EVIA MF

*Structure: See Evia general casing.
Legs: Ash wood.
Finishes: DOOS finishes catalogue. Finishes according to sample.
Fabric (cannot be made to be removed): Unit 1'25 m | 6 or more 7'5 m.
Other: 0'32 m3 | 12 Kg | x 1 package.*



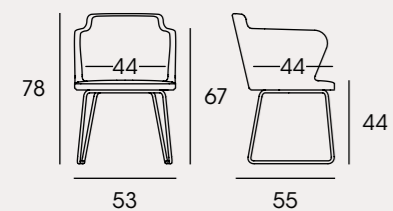
EVIA PH

Estructura: Ver carcasa general Evia.
Patas: Tubo de metal 14x2 mm.
Acabados: Cromo brillo o mate. Catálogo acabados DOOS. Acabados según muestra.
Tela (no se hace desenfundable): Unidad 1'25 m | 6 o más 7'5 m.
Otros: 0'32 m3 | 11 Kg (PH) 13 Kg (PZ) | x 1 bulto.



EVIA PZ

*Structure: See Evia general casing.
Legs: 14x2 mm metal tube.
Finishes: Chrome gloss or matt. DOOS finishes catalogue. Finishes according to sample.
Fabric (cannot be made to be removed): Unit 1'25 m | 6 or more 7'5 m.
Other: 0'32 m3 | 11 Kg (PH) 13 Kg (PZ) | x 1 package.*



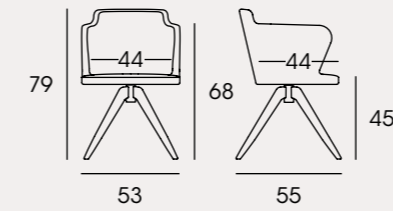
EVIA PP

Estructura: Ver carcasa general Evia.
Patas: Varilla de acero 12 mm.
Acabados: Cromo brillo o mate. Catálogo acabados DOOS. Acabados según muestra.
Tela (no se hace desenfundable): Unidad 1'25 m | 6 o más 7'5 m.
Otros: 0'32 m3 | 14 Kg | x 1 bulto.



EVIA PZ

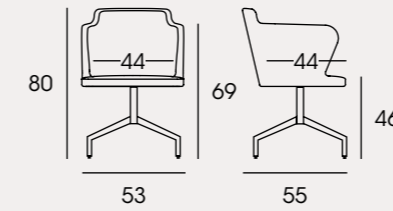
*Structure: See Evia general casing.
Legs: 12 mm steel rod.
Finishes: Chrome gloss or matt. DOOS finishes catalogue. Finishes according to sample.
Fabric (cannot be made to be removed): Unit 1'25 m | 6 or more 7'5 m.
Other: 0'32 m3 | 14 Kg | x 1 package.*



EVIA GM

Estructura: Ver carcasa pie central giratorio Evia.
Patas: Madera de fresno.
Acabados: Catálogo acabados DOOS. Acabados según muestra.
Tela (no se hace desenfundable): Unidad 1'25 m | 6 o más 7'5 m.
Otros: 0'32 m3 | 20 Kg | x 1 bulto.

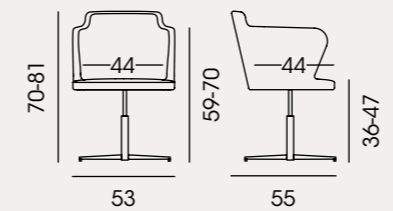
*Structure: See Evia central foot rotating casing.
Legs: Ash wood.
Finishes: DOOS finishes catalogue. Finishes according to sample.
Fabric (cannot be made to be removed): Unit 1'25 m | 6 or more 7'5 m.
Other: 0'32 m3 | 20 Kg | x 1 package.*



EVIA GA

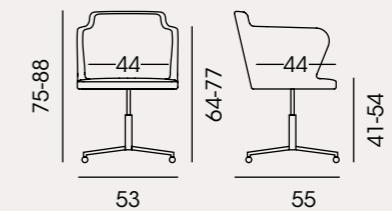
Giro rotatorio.
Estructura: Ver carcasa pie central giratorio Evia.
Pata: Tubo de acero varios gruesos.
Acabados: Cromo brillo. Catálogo acabados DOOS. Acabados según muestra.
Tela (no se hace desenfundable): Unidad 1'25 m | 6 o más 7'5 m.
Otros: 0'32 m3 | 16 Kg | x 1 bulto.

*Rotating turn.
Structure: See Evia central foot rotating casing.
Leg: Several thicknesses steel tube.
Finishes: Gloss chrome. DOOS finishes catalogue. Finishes according to sample.
Fabric (cannot be made to be removed): Unit 1'25 m | 6 or more 7'5 m.
Other: 0'32 m3 | 16 Kg | x 1 package.*



EVIA GB

Giro rotatorio y altura regulable (GB y GR). Ruedas (solo GR).
Estructura: Ver carcasa pie central giratorio Evia.
Pata: Tubo de acero y base de aluminio.
Acabados: Cromo brillo. Catálogo acabados DOOS. Acabados según muestra.
Tela (no se hace desenfundable): Unidad 1'25 m | 6 o más 7'5 m.
Otros: 0'32 m3 | 14 Kg (GB) 15 Kg (GR) | x 1 bulto.



EVIA GR

*Rotating turn and adjustable height (GB y GR). Wheels (only GR).
Structure: See Evia central foot rotating casing.
Leg: Steel tube and aluminium base.
Finishes: Gloss chrome. DOOS finishes catalogue. Finishes according to sample.
Fabric (cannot be made to be removed): Unit 1'25 m | 6 or more 7'5 m.
Other: 0'32 m3 | 14 Kg (GB) 15 Kg (GR) | x 1 package.*

METAL: COLORES GAMA RAL CONSULTAR CARTA RAL
METAL: RAL CHART COLORS SEE RAL CHART

METAL: COLORES TEXTURIZADOS
METAL: TEXTURED COLORS



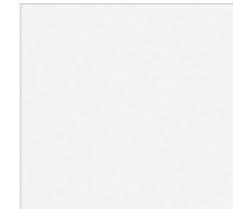
TEXTURIZADO ÓXIDO
TEXTURED OXIDE



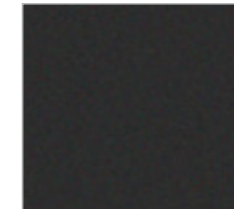
TEXTURIZADO NEGRO
TEXTURED BLACK



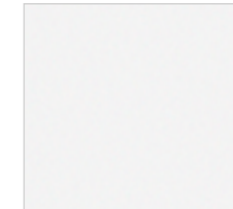
NEGRO
BLACK



TEXTURIZADO BLANCO
TEXTURED WHITE

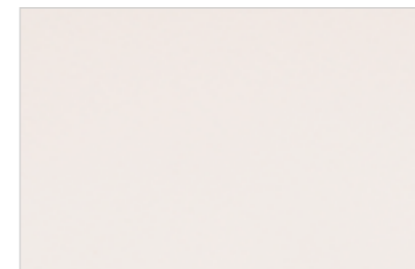


TEXTURIZADO GRAFITO
TEXTURED GRAPHITE

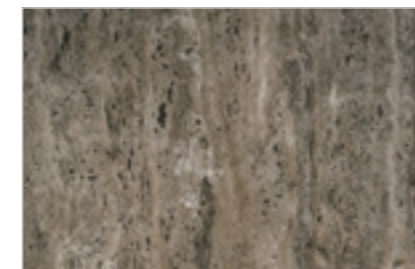


BLANCO
WHITE

PORCELÁNICOS
PORCELAIN STONEWARE



BASIC NEU



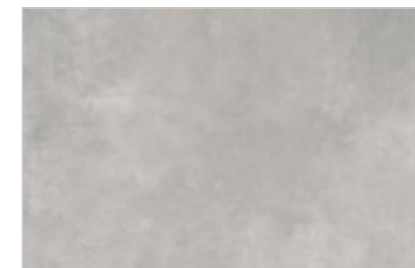
TRAVERTINO TIVOLI NATURAL



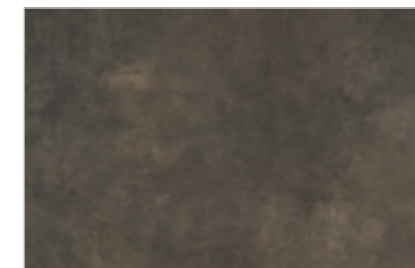
KALOS BIANCO



AGATA CARAMEL NATURAL



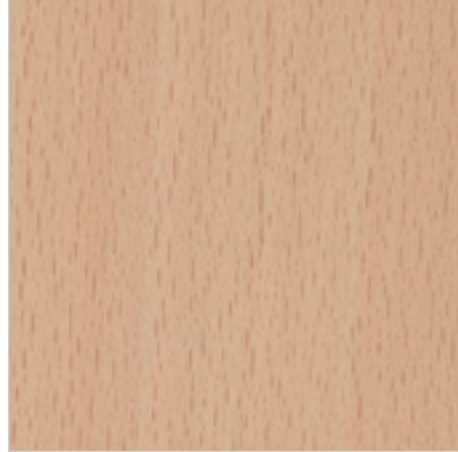
VULCANO CONCRETE



VULCANO ROCA

MADERA
WOOD

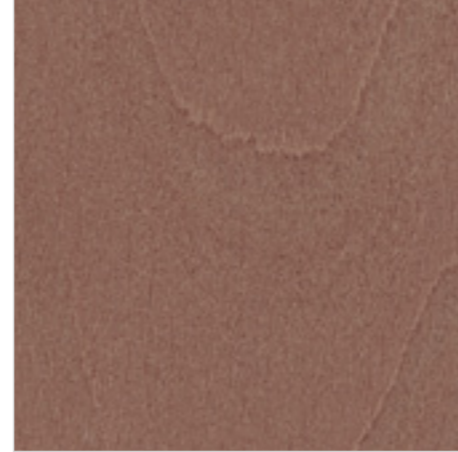
COLORES TEÑIDOS SOBRE CHAPA
DE MADERA DE **HAYA** | DYE COLORS
ON **BEECH** WOOD VENEER



NATURAL



CEREZO | CHERRY

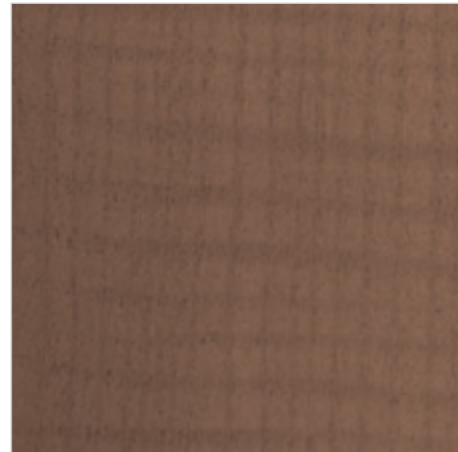


NOGAL AMERICANO | AMERICAN WALNUT

COLORES TEÑIDOS SOBRE CHAPA
DE MADERA DE **FRESNO** | DYE COLORS
ON **ASH** WOOD VENEER

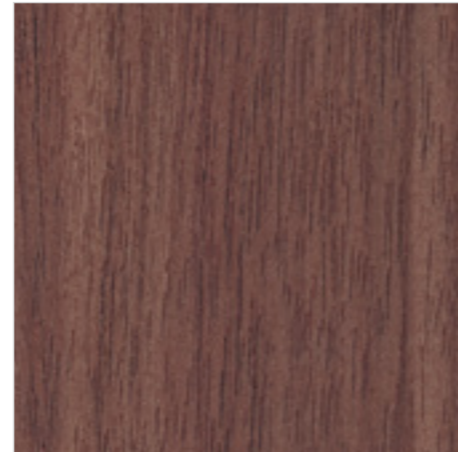


NATURAL



NOGAL AMERICANO

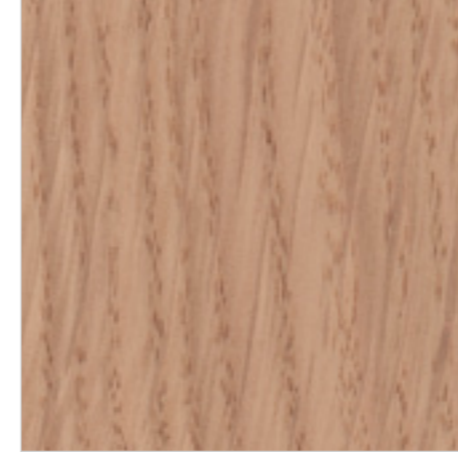
COLORES TEÑIDOS SOBRE CHAPA
DE MADERA DE **NOGAL** | DYE COLORS
ON **WALNUT** WOOD VENEER



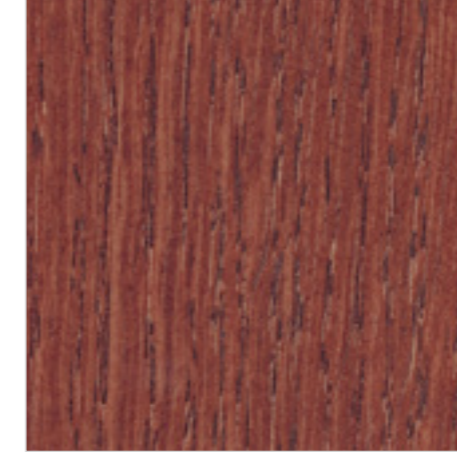
NOGAL AMERICANO | AMERICAN WALNUT

MADERA
WOOD

COLORES TEÑIDOS SOBRE CHAPA
DE MADERA DE **ROBLE** | DYE COLORS
ON **OAK** WOOD VENEER



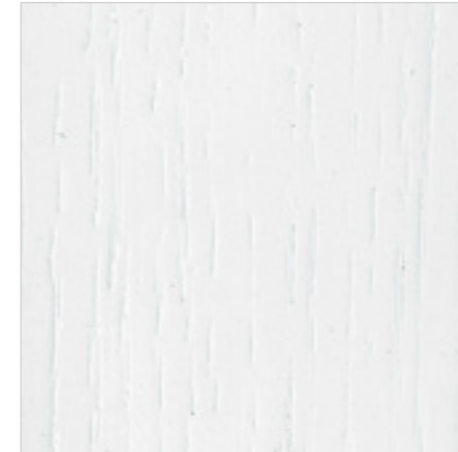
NATURAL



CEREZO | CHERRY



NOGAL AMERICANO | AMERICAN WALNUT



BLANCO PORO ABIERTO | OPEN PORE WHITE



NEGRO PORO ABIERTO | OPEN PORE BLACK



CRISTAL TRANSPARENTE | CLEAR GLASS

TELAS
FABRICS

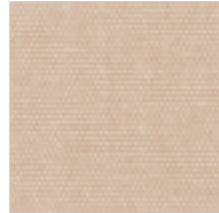
ÁFRICA. SERIE A
ÁFRICA. A SERIES



BLUSH



BLANCO



SAND



LILA



MORADO



CUIR



MARINO



ANTRACITA



CUERO

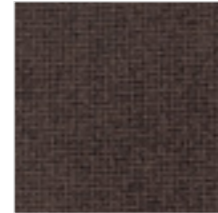


NAVI

ÁNGEL. SERIE A
ÁNGEL. A SERIES



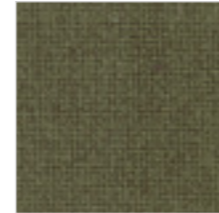
CAMEL



MARRÓN



MOSTAZA



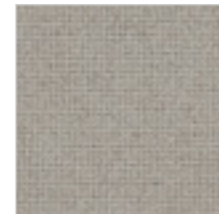
OLIVA



TIERRA



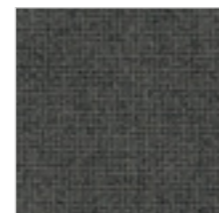
NARANJA



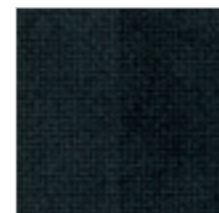
ARENA



VISIÓN



CAFÉ



NEGRO

TELAS
FABRICS

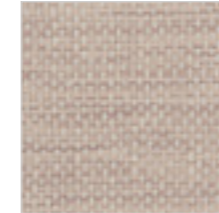
RIMINI. SERIE B
RIMINI. B SERIES



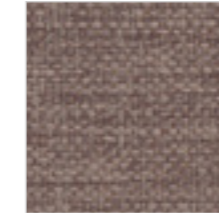
COLOR 100



COLOR 401



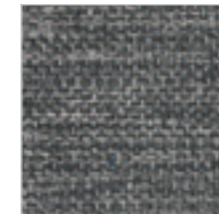
COLOR 402



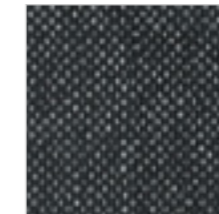
COLOR 403



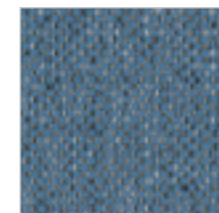
COLOR 600



COLOR 601



COLOR 200

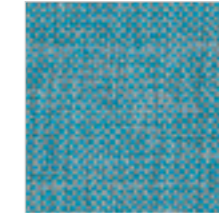


COLOR 702

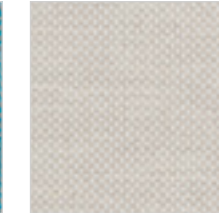
URUS. SERIE C
URUS. C SERIES



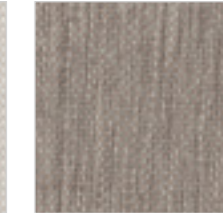
COLOR 42



COLOR 49



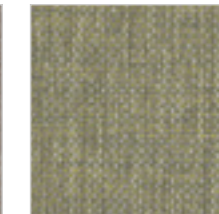
COLOR 08



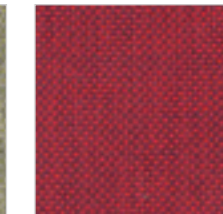
COLOR 05



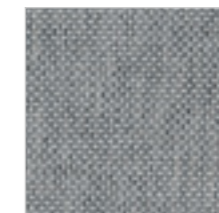
COLOR 12



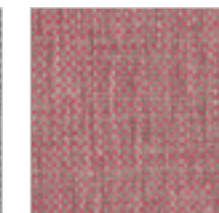
COLOR 39



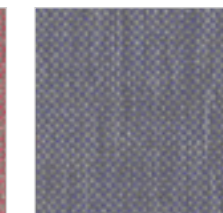
COLOR 91



COLOR 51



COLOR 60



COLOR 63

TELAS
FABRICS

LIBRA. SERIE C
LIBRA. C SERIES



COLOR 07



COLOR 10

COLOR 05

COLOR 64



COLOR 12

COLOR 40

COLOR 42



COLOR 51

COLOR 53

COLOR 52

DYNATOS. SERIE C
DYNATOS. C SERIES



COLOR 45



COLOR 102

COLOR 60

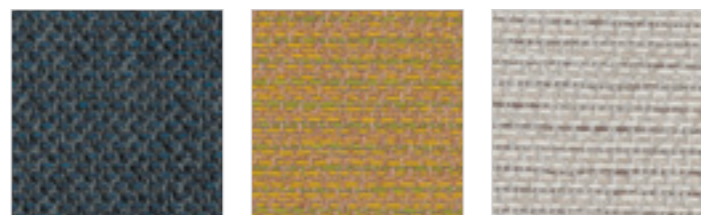
COLOR 03



COLOR 16

COLOR 12

COLOR 123



COLOR 147

COLOR 06

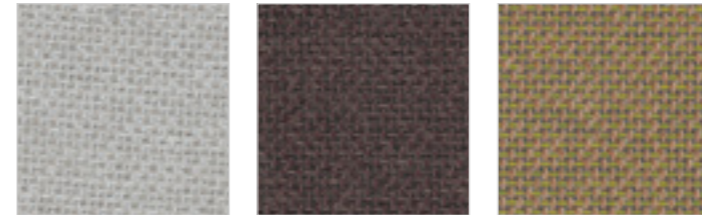
COLOR 01

TELAS
FABRICS

KOMPOS. SERIE C
KOMPOS. C SERIES



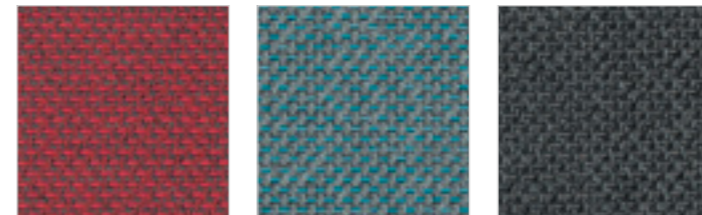
COLOR 65



COLOR 40

COLOR 15

COLOR 52



COLOR 35

COLOR 147

COLOR 67



COLOR 48

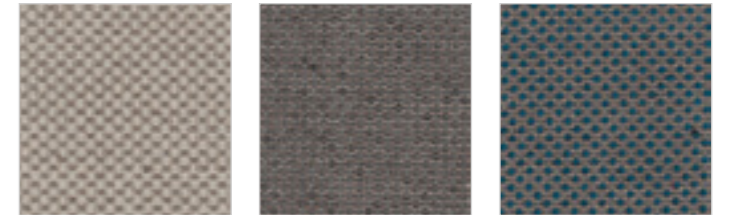
COLOR 156

COLOR 123

GEMINI. SERIE C
GEMINI. C SERIES



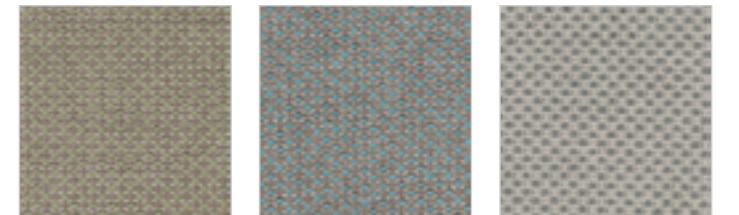
COLOR 5



COLOR 10

COLOR 12

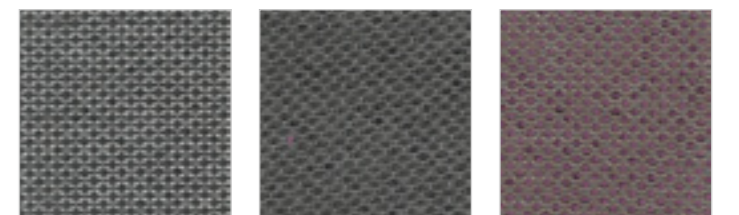
COLOR 45



COLOR 30

COLOR 40

COLOR 50



COLOR 51

COLOR 53

COLOR 63

TELAS
FABRICS

BLEND. SERIE D
BLEND. D SERIES



COLOR 11



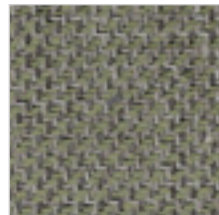
COLOR 12



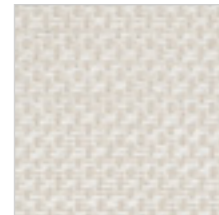
COLOR 10



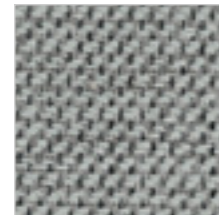
COLOR 07



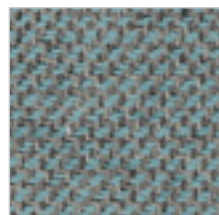
COLOR 30



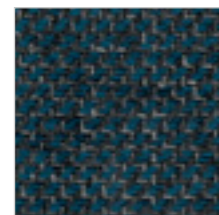
COLOR 02



COLOR 51



COLOR 49

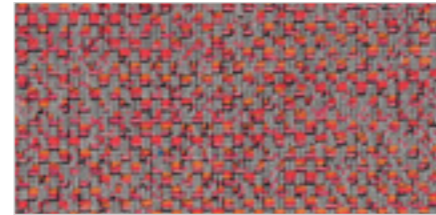


COLOR 47

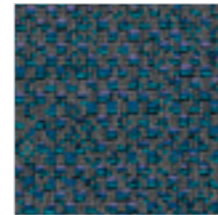


COLOR 53

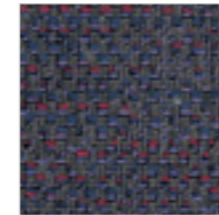
GAUDI. SERIE D
GAUDI. D SERIES



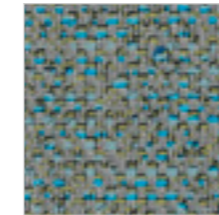
COLOR 60



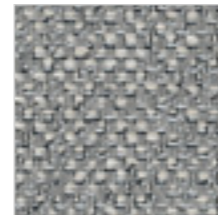
COLOR 46



COLOR 48



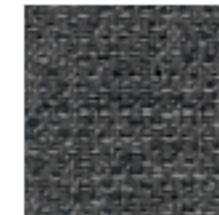
COLOR 30



COLOR 51



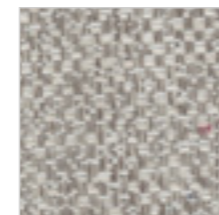
COLOR 14



COLOR 53



COLOR 12



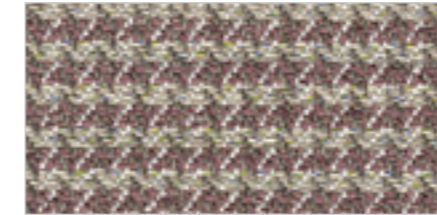
COLOR 11



COLOR 05

TELAS
FABRICS

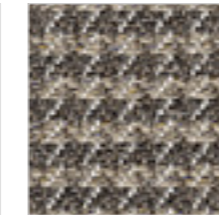
CHIC + DAS. SERIE D
CHIC + DAS. D SERIES



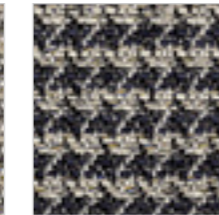
CHIC COLOR 66



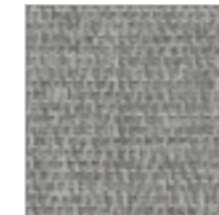
DAS COLOR 102



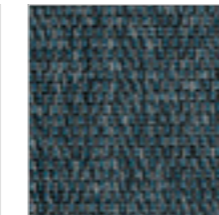
CHIC COLOR 52



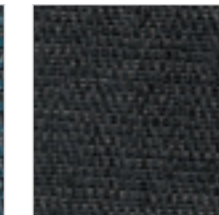
CHIC COLOR 45



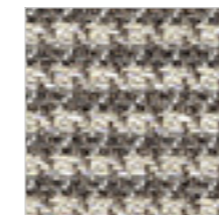
DAS COLOR 105



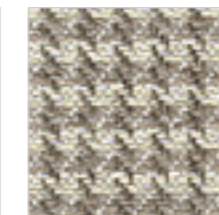
DAS COLOR 106



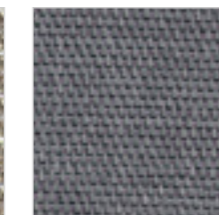
DAS COLOR 107



CHIC COLOR 10



CHIC COLOR 05

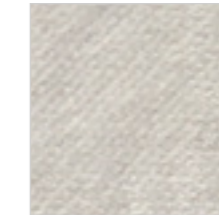


DAS COLOR 109

TELA PARA VIVOS
FABRIC FOR WELTING



NEGRO



BLANCO ROTO



BEIGE



MARRÓN